

WD Surface mount Water Detectors

- Solid state
- Gold plated sensing electrodes
- Floor and wall mount options



DESCRIPTION

The WD series detects water to prevent costly damage. Unlike float systems, it utilizes solid state detection, so is not prone to mechanical failure. The WD-1 is designed for mounting on the floor, drip pans or condensate pans, as the gold plated sensing electrodes face downwards out the back of the enclosure. The WD-2 housing accommodates mounting to a wall or vertical surface, with the gold plated sensing electrodes angled to the bottom of the enclosure.

APPLICATIONS

- Ideal for spot leak detection
- Computer rooms, critical equipment, restrooms or commercial kitchens
- Monitor condensate pans and drains—turn off equipment when pans reach limit

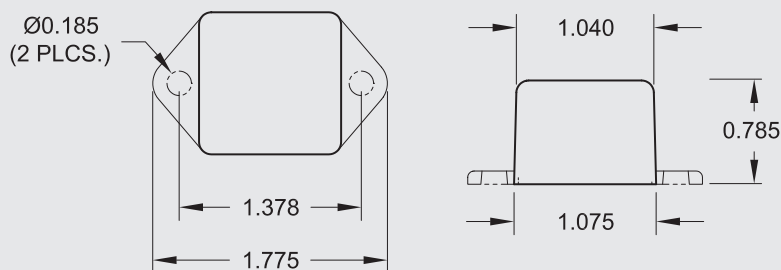


FEATURES

Reliable water detection

- Simple installation—screw or ram-set to surface
- Simple operation—no maintenance
- Solid-state design... no moving parts to fail
- Fully potted for water-proofing... maximum durability

Dimensions



ORDERING

WD-1	Floor Mount Water Detector, 9-30 VAC/DC
WD-2	Wall Mount Water Detector, 9-30VAC/DC

SPECIFICATIONS

Power Supply	9-30VAC/DC, 20mA Max.
Output	N.C. (Form B) Solid State Relay, Isolated
Output Rating	30VAC/DC, 0.1A (100mA) Max.
Sensing	Gold plated electrodes
Operating Environment	-20 to 80°C



Warning: Refer to installation instructions that accompany product and heed all safety instructions.